

At home
all over the world.



Productive.
Reliable.
Transparent.



**International
expertise**

More than 150 sales and service partners around the world specialize in continuous inkjet printers, numbering machines and camera verification systems from Leibinger.

**A consistent focus
on the customer**

Thanks to this extensive worldwide partner network, Leibinger offers you personalized advice and flawless service. No ifs and buts. And for the entire service life of your machine.

**Partnership
at its best**

Directly via our worldwide network, we will be happy to provide you with consumables as well as original brand-quality replacement parts – to ensure smooth operation at all times.

Paul Leibinger GmbH & Co. KG

Daimlerstraße 14, 78532 Tuttlingen, Germany
Phone: +49 (0) 7461 9286-0, Fax: +49 (0) 7461 9286-199
info@leibinger-group.com, www.leibinger-group.com



**Coding and marking solutions
in the Food & Beverage industry**

We know a thing
or two about freshness ...



Consumers are increasingly giving thought to a healthy and safe supply chain. They want to know more than just what goes into their food and beverages. They are also interested in the relevance,

timing and reliability of information provided. Furthermore, reports about product recalls and consumption warnings are increasingly common. The more transparent a company is, the better – since this strengthens consumer confidence, customer retention and brand loyalty. The question of what came first – the chicken or the egg – answers itself in this case. In an ideal world, you would be able to visit the animals personally and collect their fresh goods immediately. If this isn't possible, then the marking or coding on the product and packaging should at least inform you reliably about the origin, laying and use-by date.



The Leibinger EP printer series is specifically geared towards egg producers who are required to mark or code their products, and who want to apply value-added codes directly onto the egg or the outer packaging for promotional purposes.



**Benefit from all
new possibilities.**



CIJ belongs to the future.

Versatility, flexibility and economy make continuous inkjet printers the perfect solution for product coding.

Variety is
the best recipe ...



Marking in the food industry ranges from printing on packaging to coding directly on food. Whether products are manufactured industrially or in smaller batches, ingredients, batch numbers and shelf life always need to be clearly identifiable. It's really no different than with homemade jam, with all its healthy and fresh ingredients that delight you at breakfast time again and again. In your kitchen, all you may need is a good memory or a carefully handwritten label. In the trade, a lot more is required. Thanks to their wide variety of functions and models, Leibinger continuous inkjet printers offer the right solution for any labeling and coding requirement – without contact and during ongoing production. With fast-drying inks which can resist sterilization procedures, while being forgery-proof and tamper-proof.

The JET One entry-level model labels all conceivable products and materials, such as plastic, glass, wood, metal, ceramics, technical composites, cardboard and paper. On different substrates – whether convex, concave, rough, smooth, flat or relief-molded.



Ideally matched to your requirements profile.



CIJ delivers systematic benefits.

Modern printers and inks ideally suited to the application accelerate your processes and allow, for instance, compliance with serialization and anti-counterfeit policies.

Quality immediately catches your eye ...



one, two, three, four, five
once I caught a fish alive,
six, seven, eight, nine, ten,
then I let it go again.



CIJ has everything under control at all times.

Even after breaks in production, the printers start up again immediately without requiring any cleaning or rinsing cycles – thanks to the Sealtronic sealing system.



Connoisseurs can tell if a fish is fresh by unmistakable features such as a neutral smell, shiny eyes, tight gills or supple, yielding flesh. However, since fish is a perishable food, it is usually processed on

the fishing vessel or cured using preservatives. In addition to frozen products, there is a wide range of fish products on the market, and consumers need to be able to rely on their correct declarations. We know that food safety and efficiency are among your key requirements as a processing company. Therefore, our clever mix of solutions creates ideal conditions for production plants, which can be used to produce high-quality foodstuffs in an especially economical manner. Our continuous inkjet industrial printers produce up to five lines of highly readable characters at the highest speeds.



The JET2neo, JET3up and JET Rapid inkjet printer series from Leibinger print texts, graphics and all common data matrix codes in just a few milliseconds. Guaranteed without smudging so that information remains available when it is needed.



Faster than fast on the conveyor belt.

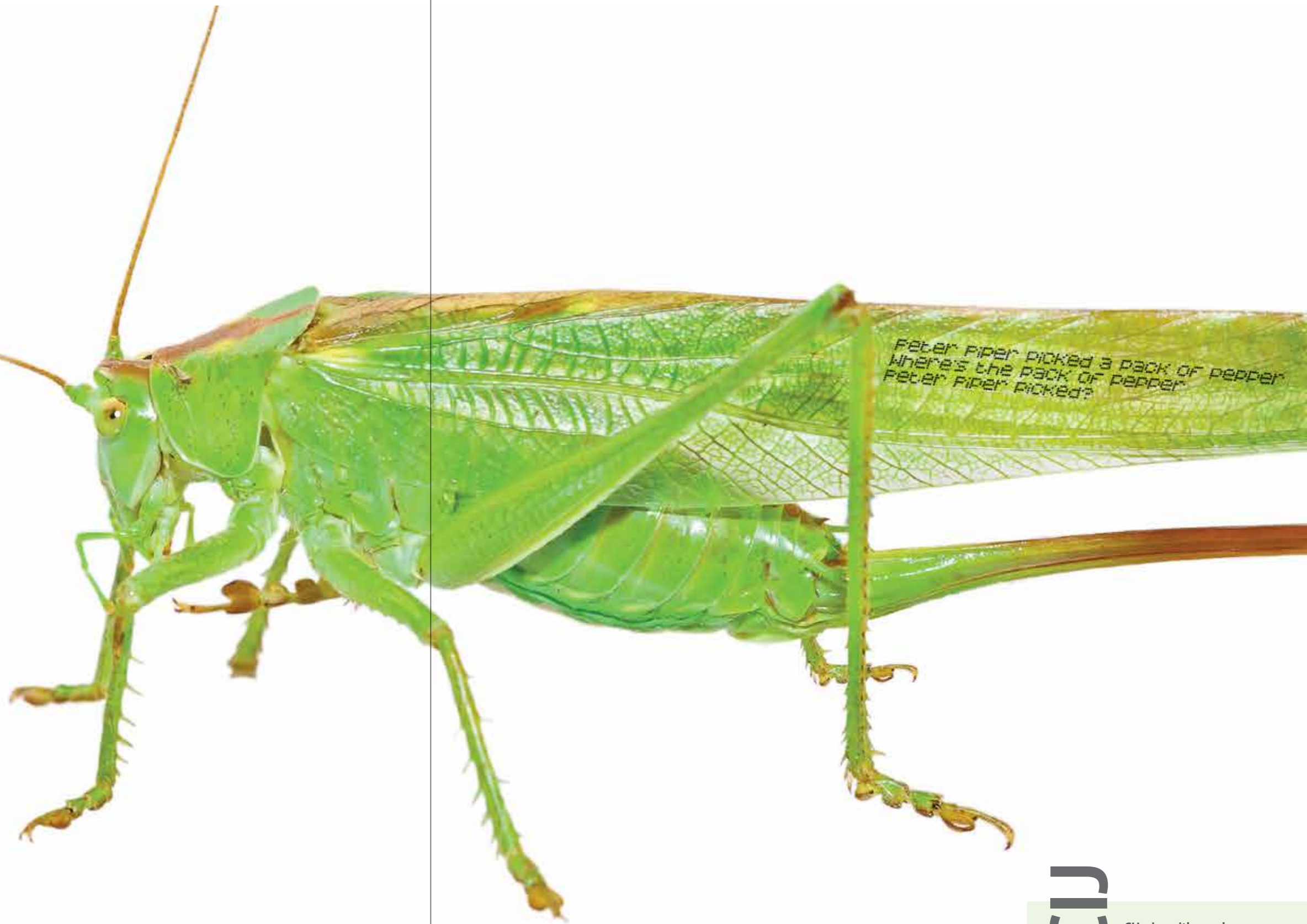
Open for anything the future brings ...

Today, there are more than two billion people worldwide who regularly eat insects. In many countries, they represent a real alternative to traditional meat. This is due to their high protein content, and to their many minerals and unsaturated fatty acids that are important for the human body. Compared to traditional protein sources such as beef or pork, insect breeding is also generally more environmentally friendly. There is every reason to assume that insects will soon be on the menu in Western countries as well. As a salted snack perhaps. Our inks on all types of packaging, as well as inks that are suitable for snacks and confectionery, have already proven that fats, salt, dust and other substances in the production environment do not affect code adhesion and print quality. New recipes, flavors, sales promotions and packaging sizes do not present problems either.

Original inks for Leibinger printers offer the right solution for many applications. We will be pleased to advise you, to test possible options and to create a print sample without any obligation. Virtually anything is possible with us – even ISEGA-approved and FDA-compliant edible inks.



Always up to date.
Always an idea ahead.



CIJ wins with a real competitive edge.

The result is convincing: whether on film, cardboard, plastic-aluminum packaging or tetra packs. Either in flow-wrapped packaging or directly on the product.

LEIBINGER

Refreshingly
uncomplicated ...



Water fulfills several vital functions in the body. We have to drink enough daily to ensure non-stop supply and replenishment. 1.5 liters are recommended.

Alongside other thirst quenchers

produced and marketed by the beverage industry, it is also available in the form of mineral water. Filling 100,000 bottles per hour is far from uncommon, which is why coding in small letters needs to be carried out within the shortest possible time and during ongoing production. For continuous inkjet printers, it doesn't matter whether the coding needs to take place directly on a concave or convex part of the bottle or can, on a tetra pack or a label. They ensure that multi-line imprints such as date of manufacture and use-by dates, as well as the batch number can be printed reliably in spite of rapid speeds, and then checked and logged by our camera systems.



The printers are operated via a 10.4" touch screen that is as intuitive to use as common digital devices. What's more, if the user integrates the printer into the company network, he or she can control and monitor it from any point on the globe – via PC, smartphone or tablet.



Automation at the highest level.



CIJ works at a record-setting pace.

Our printers are fast enough to mark and code up to 2,000 products per minute in passing with flying ink drops.

At some point during the current century, a bottle of pure water will cost more than a bottle of wine.

Solutions in the food industry ...



Typical codes

- Use-by dates
- EAN codes/GS1 data matrix code
- Barcodes
- Characters and texts
- 2D codes, e.g. QR code, data matrix code ...
- Batch/lot numbers
- Company logo
- Lucky numbers



Materials

- Cardboard
- Plastics, plastic film such as PET, PP, foil, bags ...
- Glass, reusable and disposable bottles and jars
- Metal, e.g. cans/tins/bottle caps
- Eggshells
- Foods



Typical application examples

- Marking primary packaging
- Coding secondary packaging
- Egg coding
- Outer packaging
- Direct printing of food, e.g. for advertising and promotional campaigns
- Coding in wet production environments
- Traceability/Track & Trace/Identification
- Use of FDA-compliant inks



Typical print control tasks

- Print control/verification/image processing of various imprints
- Control of presence, e.g. on donated products (cards or sample goods)
- Reliable control of inkjet fonts (small character printers)
- Logging of the production order for quality management



Solutions in the beverage industry ...



Typical codes

- Use-by dates
- Date of manufacture
- EAN codes/GS1 data matrix code
- Barcodes
- Characters and texts
- 2D codes, e.g. QR code, data matrix code ...
- Batch/lot numbers
- Company logo
- Lucky numbers

Materials

- Glass bottles
- Disposable bottles
- Reusable bottles/recycling bottles
- White glass
- Brown glass, e.g. beer bottles
- Green glass, e.g. beer bottles
- PET bottles
- Cans (beverage cans)
- Beverage cartons such as Tetra Paks and packaged drink packs made of composite film
- Bottle caps
- Labels made of paper
- Labels made of foil/plastic
- Trays/carton trays/plastic trays
- Shrink wrap

Typical application examples

- Re-washable coding for reusable bottles/recycling bottles (alkaline solution)
- Durable product coding during delivery and use by the end-user
- Use of (soft) pigmented inks (OPAK inks) for high contrast on darker substrates, e.g. for coding on brown or green beer bottles
- Coding soft drinks
- Marking of wine and champagne bottles
- Coding spirits
- Marking mineral water bottles
- High production speeds (100,000 products/h)
- On-the-fly" coding
- Coding primary packaging
- Marking secondary packaging
- Outer packaging
- Concave or convex surfaces
- Coding in wet production environments
- Traceability/Track & Trace/Identification
- Use of FDA-compliant inks

Typical print control tasks

- Print control/verification/image processing of various imprints
- Reliable control of inkjet fonts (small character printers)
- Logging of the production order for quality management

